

EW7025

## USB-C 3.2 Gen2 Screwless M.2 NVMe SSD Enclosure

- Solid aluminium screwless enclosure for a M.2 NVMe SSD (Solid State Drive) up to 80mm
- UASP support for a higher data transfer
- SuperSpeed+ USB 3.2 Gen 2 speed up to 10Gbps
- Including USB 3.2 C-C and C-A cables
- Lightweight and pocket-sized: easy to take along
- LED status indicator
- USB powered
- Backwards compatible with USB 3.0 and USB 2.0

### DESCRIPTION

Protect your M.2 NVMe SSD with the solid aluminium EW7025 Portable USB-C 3.2 Gen2 M.2 NVMe SSD Enclosure. The EW7025 is light-weighted and pocket-sized so easy to take along. The enclosure supports M.2 NVMe SSDs with M-key connectors. SuperSpeed+ USB-C 3.2 Gen2 and UASP both ensure a quick file transfer.

Compact and solid enclosure

Your M.2 NVMe SSD is kept safe within the EW7025 solid aluminium housing. The enclosure is light-weighted and pocket-sized so you can take it easy along with you.

Suitable for M-Key M.2 connectors

Does your M.2 NVMe SSD have a M connector? Place the M.2 NVMe SSD easily into the enclosure. Use a M.2 NVMe SSD up to 80mm.

Super Speed+ USB 3.2 Gen2

The EW7025 is USB powered with SuperSpeed+ USB 3.2 Gen2 and has UASP (USB Attached SCSI-Protocol) support. These features both ensure high speed data transfer. The enclosure is backwards compatible with USB 2.0.

Ready for use in only 2 minutes

Besides the aluminium SSD Enclosure we also provide a USB 3.2 Gen2 Type-C to C and a USB 3.2 Gen2 Type-C to A cable. Your M.2 SSD is ready to use within a few minutes.

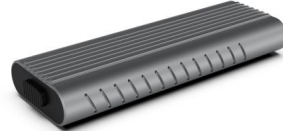
### TECHNICAL

- M.2 supported SSD types: M key (NVMe)
- M.2 SSD type B or B+M key (SATA) is NOT supported
- M.2 SSD size: 2230, 2242, 2260, 2280
- Full aluminum case with heat dissipation
- Blue LED: Indicates power and data transmission
- Supports USB 3.2 Gen2, speeds up to 10Gbps
- Supports UASP protocol for higher data transmission
- Support SSD up to 4TB
- Including: USB 3.2 gen2 C-C and C-A cables
- USB2.0 and USB1.1 backwards compatible
- Power: DC 5V 0.5A via USB 3.2 cable
- Dimensions in mm. (WxHxD) 39x16x108mm
- Weight 48gr

### LOGISTIC

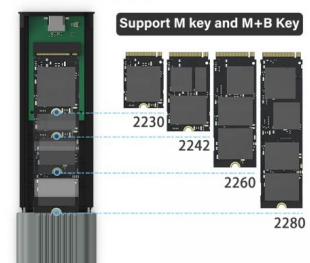
- Product Weigth: 150.00 g
- Retail packaging Dimension (mm): 150 x 135 x 38

- Retail packaging Weight: 180 g
- Master carton Qty: 50
- Master carton Dimension (cm):



### M.2 NVMe SSD Enclosure

solid-state hard drive transfer USB 3.1 interface to the mobile hard disk,  
using type C cable connection, support 2230/2242/2260/2280 four specifications



### Convenient Installation Design

Mount Drives only in 4 steps

